

Process Informatics Inc.
Innovations in Process Excellence!

π = 3.14159265
3589793238
4626433832

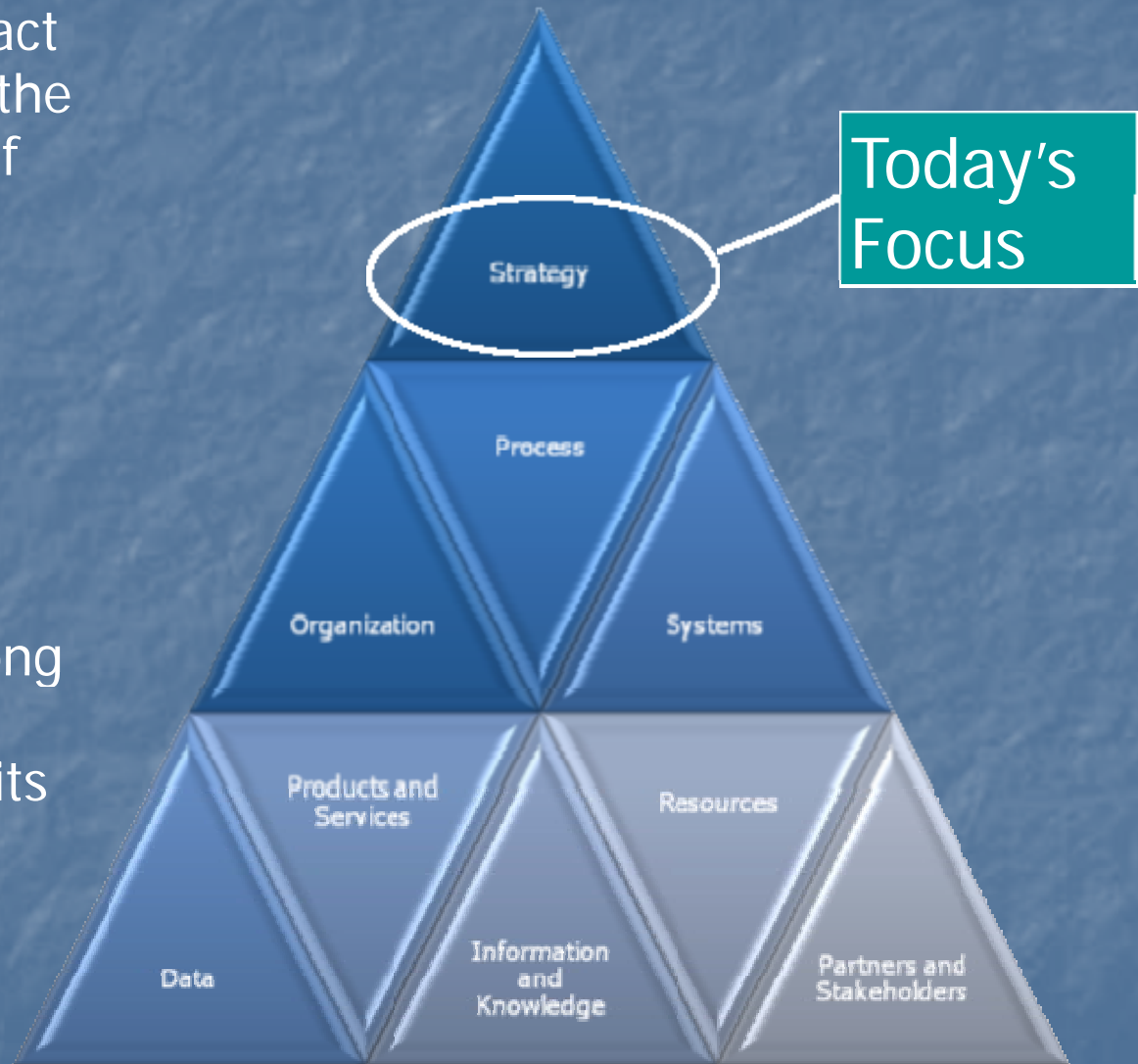
$$\frac{1}{\sqrt{2\pi}} \ln(\sigma\sqrt{2\pi e})$$

Enterprise Architecture & Organizational Strategy

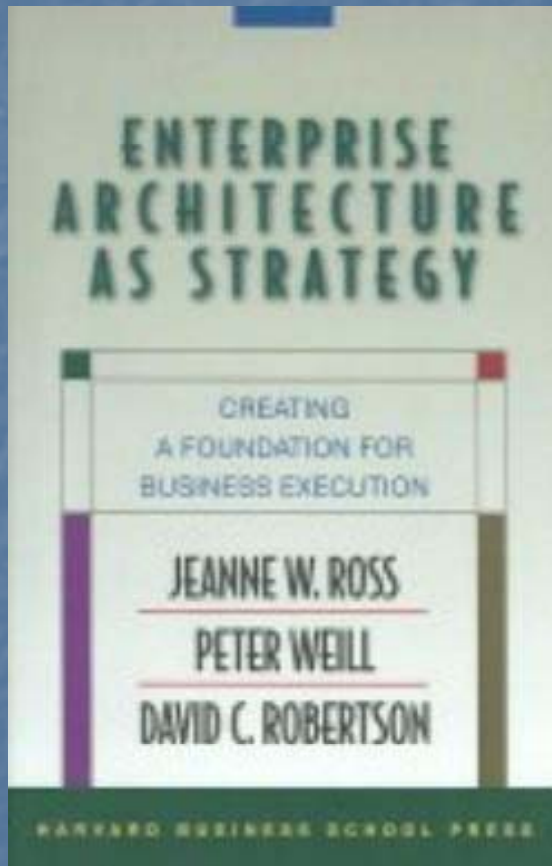
*Increasing the Value of
Enterprise Architecture*

Enterprise Architecture

Enterprise Architecture: “an abstract dynamic causal representation of the function, structure and behavior of the enterprise, showing the configuration of major enterprise elements (e.g., processes, technologies, organizational units, knowledge, information systems) and how they are aligned, and mapping the multilevel and multidimensional interactions among them as well as the interactions between the enterprise itself and its evolving external environment,” (Lean Advancement Initiative, 2006).



Classical View of Enterprise Architecture & Strategy



- Aligns core processes with appropriate technology
- Stages of enterprise architecture maturity centered around IT investment types
 - Local applications
 - Enterprise systems
 - Shared infrastructure
 - Shared data
- Creates strategic advantage through intelligent IT investments

Process Informatics Method

- Move beyond IT and strategy alignment
- Align strategy and business processes
- Controls for business success through metric assignment to strategic processes
- Mitigate risk through identification of process and system centric risks

Approach

Strategy-making

Defining goals, objectives and potential risks



Strategic business process identification

Mapping goals, objectives and risks to operational activities



Controlling for success

Establishing metrics associated with business processes

Strategy Models

- Strategic Capabilities
 - Depicts organization's mission and organizational strategic goals
 - Key performance indicators are assigned to specific objectives
- Mapping Models
 - Ties strategic goals and identified risks to operational activities
- Key Performance Indicators Model
 - Maps KPI to business processes

Advantages

- Provides distinct linkages between strategy and operations
- Integrates strategic mission with traditional enterprise architecture
 - Maintains classic thinking regarding aligning IT and strategy